



TigerPROFILES
INSULATION LLC

Mineral Wool Fire-Retardant Roof & Wall Panels

TigerPROFILES & Insulation—The “Roof & Cladding” Company

TigerPROFILES & Insulation, the “Roof & Cladding” company is a comprehensive source to the construction industry’s Roofing, Cladding & Insulation solutions.

Established in the UAE in 1993 as the “cladding” arm of the Tiger Steel Group of Companies, **TigerPROFILES**, operates three plants/factories that serve the GCC, Middle East, Asia & Africa’s need for its specialized products and systems.

The product line presented by **TigerPROFILES** encompasses roof panels, wall panels, floor deck panels, steel & aluminum profiled sheeting, partitioning, sandwich panels, concealed fix wall panels, pre-insulated partitions, cold store panels, standing seam systems (known as T-Seam®), & cold formed sections both standard & customer specific as well as all the required accessories.

TigerPROFILES extends Design, Engineering, Manufacturing, Supply & Installation services to its clients, thus placing it in a position to serve its clients as a one stop-source.

In parallel, **TigerPROFILES** is the sole distributor – Middle East, Asia & Africa for SolaCoat & SolaSteel triple award winning eco-friendly “green” heat reflecting coatings.

TigerPROFILES is classified as one of the largest producers in the UAE & a regional & major manufacturer of PUR/PIR/Mineral wool insulated panels.

Standing tall, **TigerPROFILES** has raised itself from the crush of the crowd by setting international standards that set it apart from any other companies in the business.

Adhering to ISO 9001, ISO 14001, OHSAS 18001, FM Approvals (USA), DBIT Approvals (Germany) as well as Dubai Municipality & Dubai Civil Defense is only the tip of the commitment to international standards by **TigerPROFILES**’s management.

Its commitment to the Environment is loud & clear – an active member of the Emirates Environmental Group, **TigerPROFILES** not only works on protecting the environment, but also works on caring, cleaning & maintaining it.

TigerPROFILES is a member of the US Green Building Council & the Green Aviation & Logistics Group.

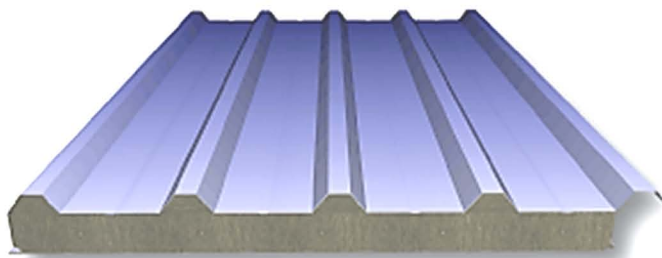
Panel Range

> **Roof & wall panels: (Thickness: 50, 60, 80 mm)**

- ◇ Profile Sandwich Panels: (TR 45/150)
- ◇ Profile Sandwich Panels: (TR 45/250)

> **Partition wall panels (Thickness: 50, 60, 80 mm)**

- ◇ Flat Panels: (1000/1150)
- ◇ Micro Type Panels: (1000/1150)
- ◇ Micro Plus Type Panels: (1000/1150)
- ◇ V-Type Panels: (1000/1150)
- ◇ Shallow Ribbed Type Panels: (1000/1150)



Material Options

> **Outer Skin: Profiles Sheet**

- Polyester coated
- Aluminum coated
- Alu-Zinc Coated

> **Inner Skin:**

- Shallow Ribbed



TigerPROFILES’ uses mineral wool approved by Dubai Municipality and Dubai Civil Defense.

Moisture

Water repellent, non-hygroscopic, non-capillary, and does not absorb any moisture from the air. Moisture has no effect on the stability of the slabs. Water absorption test certificate conducted under BS 2972:Section 12 and ASTM C-209 are available upon request.

Thermal Conductivity

Thermal conductivity values with typical figures shown below as tested in accordance with BS 874, equivalent ASTM C177/ C518 (180 8302/180 8301) and DIN 52612 standards.

Mean Temp °C	K-Value W/mK 100 kg/m ³
50	0.037
100	0.044
150	0.052
200	0.061
250	0.072
300	0.084
350	0.098
400	0.118

Mineral Wool Details

Acoustic Properties

Typical sound absorption figures are shown below in accordance with BS 3638 & ISO 0354:

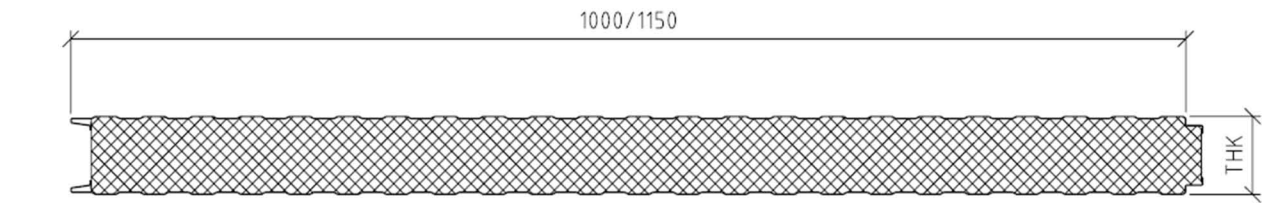
Hz	100 kg/m ³
125	0.23
250	0.66
500	1.05
1000	1.07
2000	1.05
4000	0.97

Fire Safety

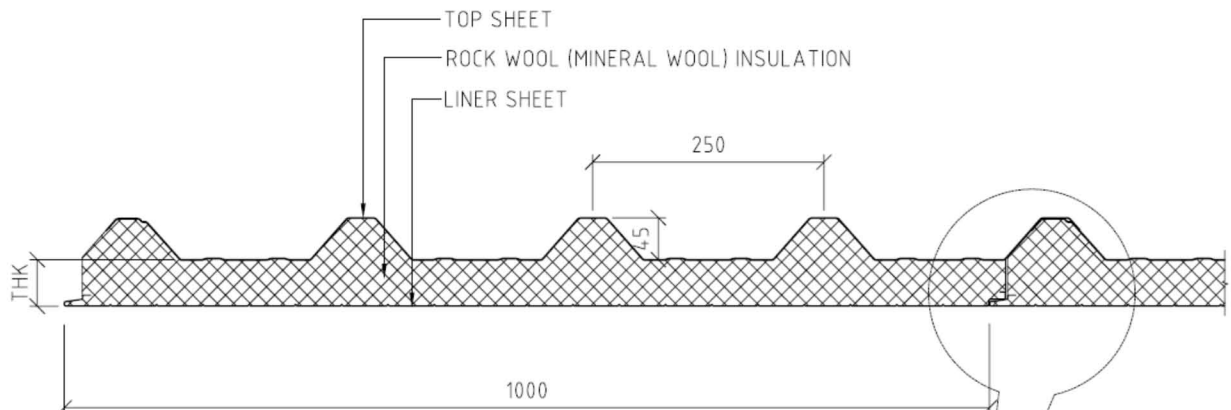
Non-combustible when tested in accordance with B8-476: Part 4 and A8TM E-136. Class I, when tested in accordance with BS 476 part 7 and ASTM E - 84.



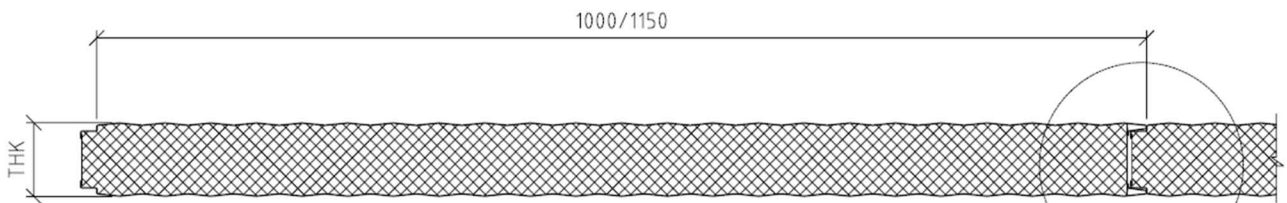
Standard Details: Roof Panels - 45/250 Profile & Wall Panels with Shallow Ribs with Tongue & Groove



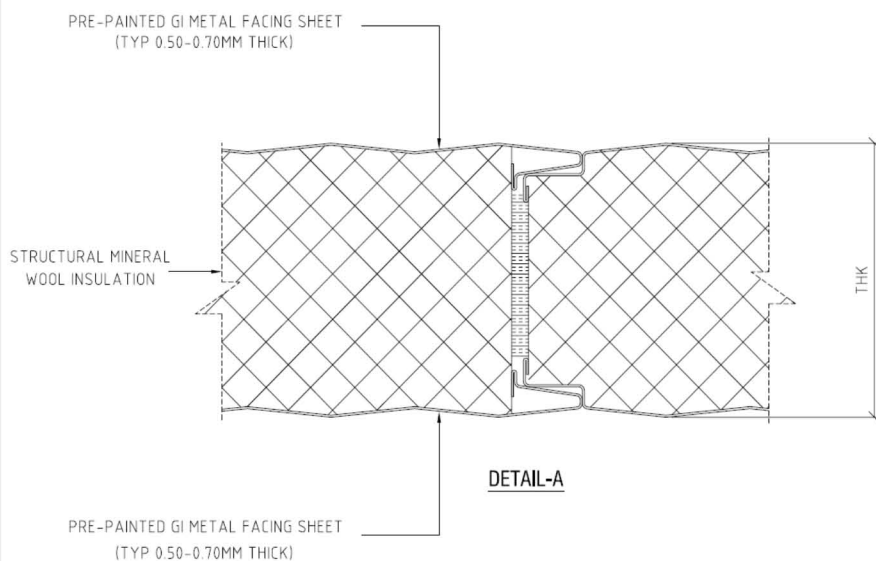
SHALLOW RIBBED TYPE PANEL



PROFILE TR-45/250 SANDWICH PANELS



INTERLOCKING SIDE JOINT DETAIL



Notes:

1. To seal the joints on site as per project requirements & specs;
2. When applicable, to stitch the joints at one or both sides at 300MM C/C as per project requirements & specs

