

**TigerPROFILES & Insulation**, the “Roof & Cladding” company is a comprehensive source to the construction industry’s Roofing, Cladding & Insulation solutions.

Established in the UAE in 1993 as the “cladding” arm of the Tiger Steel Group of Companies, **TigerPROFILES**, operates three plants/factories that serve the GCC, Middle East, Asia & Africa’s need for its specialized products and systems.

The product line presented by **TigerPROFILES** encompasses roof panels, wall panels, floor deck panels, steel & aluminum profiled sheeting, partitioning, sandwich panels, concealed fix wall panels, pre-insulated partitions, cold store panels, standing seam systems (known as T-Seam®), & cold formed sections both standard & customer specific as well as all the required accessories.

**TigerPROFILES** extends Design, Engineering, Manufacturing, Supply & Installation services to its clients, thus placing it in a position to serve its clients as a one stop-source.

In parallel, **TigerPROFILES** is the sole distributor – Middle East, Asia & Africa for SolaCoat & SolaSteel triple award winning eco-friendly “green” heat reflecting coatings.

**TigerPROFILES** is classified as one of the largest producers in the UAE & a regional & major manufacturer of PUR/PIR/Mineral wool insulated panels.

Standing tall, **TigerPROFILES** has raised itself from the crush of the crowd by setting international standards that set it apart from any other companies in the business.

Adhering to ISO 9001, ISO 14001, OHSAS 18001, FM Approvals (USA), DBIT Approvals (Germany) as well as Dubai Municipality & Dubai Civil Defense is only the tip of the commitment to international standards by **TigerPROFILES** management.

Its commitment to the Environment is loud & clear – an active member of the Emirates Environmental Group, **TigerPROFILES** not only works on protecting the environment, but also works on caring, cleaning & maintaining it.

**TigerPROFILES** is a member of the US Green Building Council & the Green Aviation & Logistics Group.

- > **Material:**
  - o Aluminum
  - o Alu-Zinc
  - o Galvanized Iron (G.I)
- > **Finish:**
  - o Mill Finish
  - o Stucco Embossed
  - o Polyester coated
  - o PVF 2 Color coating
- > **Material Thickness:** 0.46mm to 1.00mm
- > **Type:**
  - o Shallow-rib
  - o V-plus rib
  - o Micro-rib
  - o Stripes
  - o V-rib
  - o Flat
- > **Color:** RAL Color range; special colors can be accommodated upon client request.
- > **Rigid Polyurethane Foam:** with 90% minimum closed cells (fire retardant quality available upon request). Available in thicknesses of 35mm, 50mm, 75mm and 100mm.
- > **Solasteel:** Metal Pre-Coating—Eco-Friendly Gold GAIA Award Winning Heat Reflecting Coating Solely available in the Middle East, Asia & Africa through **TigerPROFILES**

The Concealed Fix Wall Panels produced by **TigerPROFILES** can be produced in varying thicknesses of respective thermal insulation values as follows:

PUR/PIR Core Thickness (mm)	Overall Heat Transfer Co-efficient			Additional Value of Insulation in Corrugated Area
	W/m <sup>2</sup> °C	Kcal/m <sup>2</sup> h°C	BTU/Ft <sup>2</sup> h°F	
T—50	0.38	0.34	0.069	20%
T—75	0.24	0.22	0.046	13%
T—100	0.19	0.18	0.037	10%

- > The above values are based on thermal conductivity ( $\lambda$ ) = 0.029 W/(m-K) @ T = 35°C and RH = 60%
- > The recommended average density for polyurethane foam is 38kgs/m<sup>3</sup>. Other densities are available upon request.

**TigerPROFILES** PUR/PIR Concealed Fix Wall Panel cores are approved & certified by Dubai Municipality against the standard BS EN 13165: 2008 (Thermal Insulation products for buildings – Factory made rigid polyurethane foam (PUR) products).

### Length & Width Tolerances

Dimensions (mm)	Tolerances (mm)
<1000	±5
1000 to 2000	±7.5
2001 to 4000	±10
>4000	±15

### Thickness Tolerance (mm)

Class	Nominal Thickness (mm)		
T2	<50	50 to 75	>75
	±2	±3	+5, -2

### Dimensional Stability DS(TH)8. (Test Conditions):

- A) (48±1)h at (70±2)°C ; RH = (90±5)%
- B) (48±1)h at (-20±3)°C

Dimensional Stability DS(TH)8			
Test condition	Relative Changes		Level DS(TH)8
A	$\Delta\epsilon_i$	%	≤2
	$\Delta\epsilon_b$		
	$\Delta\epsilon_d$	%	≤6
B	$\Delta\epsilon_i$	%	≤1
	$\Delta\epsilon_b$		
	$\Delta\epsilon_d$	%	≤2

**Water Vapor Transmission (ASTM E 96): ≤4 Perm.inch**

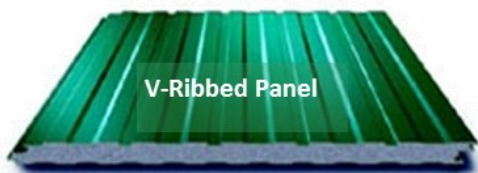
## System Advantages

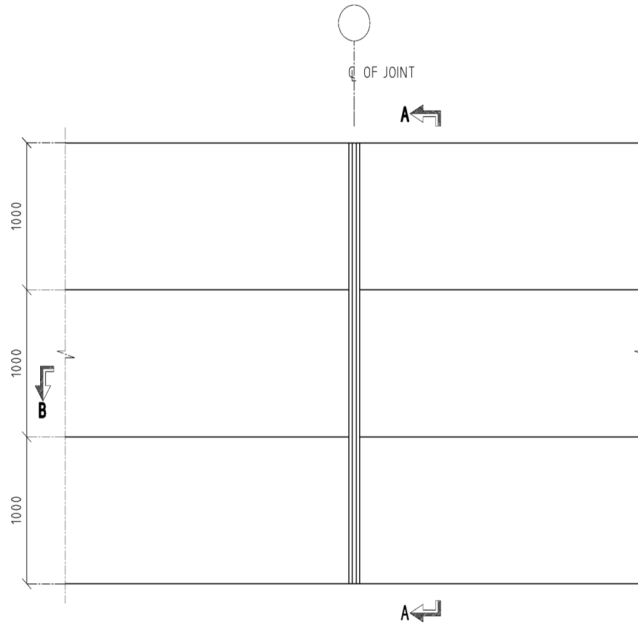
### Why Use TigerPROFILES Concealed Fix Wall Panels?

#### Because they:

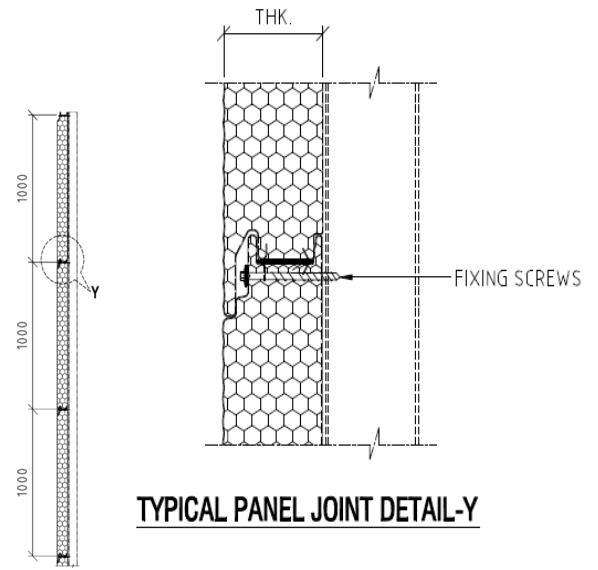
- ◇ Are suitable for residential, industrial and commercial applications.
- ◇ Are available in standard and custom widths, in a variety of colors and materials that appeal to a wide range of customer preferences and requirements.
- ◇ Are simply and quickly assembled in a side-by-side overlapped relation. Their implementation offers an attractive, flat wall appearance for architectural, commercial and industrial markets.
- ◇ Are watertight and present a durable resistance to most weather conditions.
- ◇ Posses outstanding insulating properties due to the superior chemical structure of the PUR/PIR insulation core.
- ◇ Have a low dead weight due to the combination of lightweight materials.
- ◇ Have a low maintenance cost due to the implementation of selection of long life materials.

## Design Samples



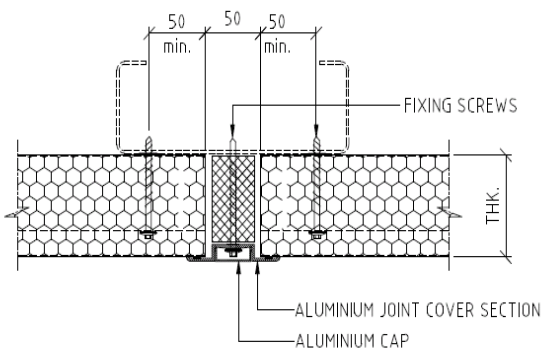


**WALL PANEL PARTIAL ELEVATION**

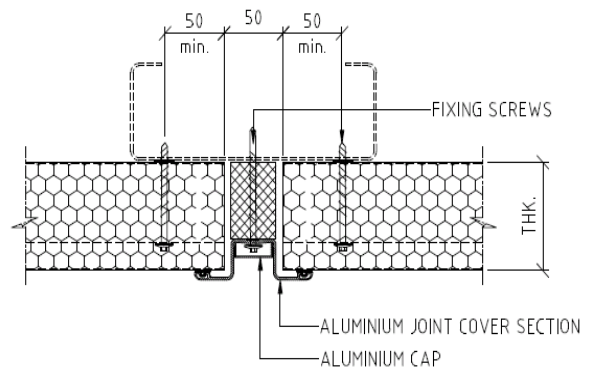


**SECTION - A A**

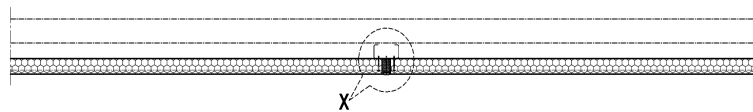
**TYPICAL PANEL JOINT DETAIL-Y**



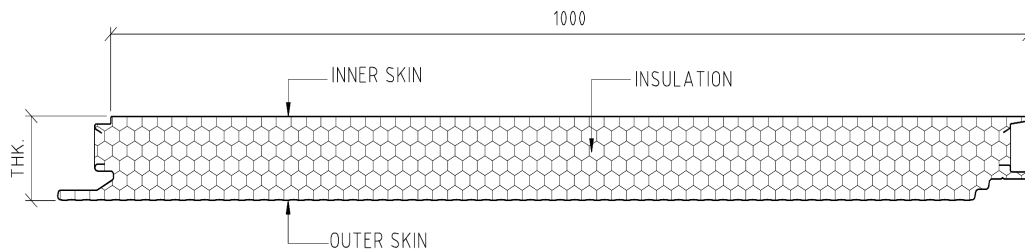
**PANEL VERTICAL JOINT DETAIL - X  
OPTION - 1**



**PANEL VERTICAL JOINT DETAIL - X  
OPTION - 2**



**SECTION - B-B**



**CONCEALED WALL PANEL DETAIL**

**TigerPROFILES**, the “Roof & Cladding” Company is your source for comprehensive, innovative, sustainable, Roofing, Cladding & Insulation Solution for the civil, military & aviation construction sectors.

**TigerPROFILES** systems and solutions are certified and/or approved by various authorities as evident below.

**TigerPROFILES** offerings encompass a range of systems and products that include:

- o T-Seam® metal standing seam systems;
- o K-Span stand-alone systems;
- o PUR/PIR/Rockwool Insulated Systems & Products: (manufactured with ZERO Ozone Depletion Potential (ODP) & ZERO Global Warming Potential (GWP) blowing agents) :
  - ◇ Sandwich panels;
  - ◇ Concealed fix wall panels;
  - ◇ Cold store panels;
  - ◇ Pre-Insulated Partition Panels;
  - ◇ Pre- Insulated Ventilation Ducts.
- o Roof tiles and profiles;
- o Trapezoidal and Sinusoidal Profiles;
- o Z-purlins, C-purlins and C-channels;
- o Dry wall Partitions - studs/tracks/ceiling grids;
- o Floor decking;
- o Flashings and Accessories;
- o Solasteel\* Metal Pre-Coating—Eco-Friendly Gold GAIA Award Winning Heat Reflecting Coating
- o Solacoat\* Exterior Surface Post-Coating—Eco-Friendly Silver GAIA Award Winning Heat Reflecting Coating

*\* Solely available in the Middle East, Asia & Africa through TigerPROFILES and its appointed distributors.*

